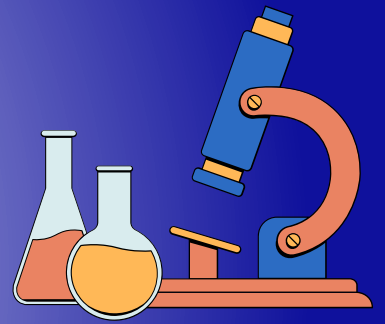


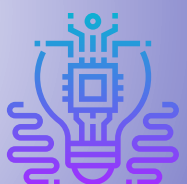


GK TECH SOLUTIONS



GK PRODUCTS CATALOGUE

POWERING SCIENCE AND TECHNOLOGY TOGETHER





pH Meter

- Measurement Range: 0.00 to 14.00 pH
- Accuracy: ± 0.01 pH | Resolution: 0.01 pH
- Display: Large Digital LCD with backlight
- Calibration: 2-point, 3-point or 5 Point (Auto/Manual)
- Temperature Compensation: Automatic (ATC)
- Range: 0°C – 100°C
- Electrode Type: Replaceable glass electrode
- Power Supply: Battery or Adapter (model dependent)
- Available Models: Portable / Benchtop

Micropipette

- Volume Range: 0.1 μ L to 1000 μ L (model-dependent)
- Types: Variable Volume & Fixed Volume
- Accuracy: High precision with ISO 8655 compliance
- Display: Digital volume display window (on variable models)
- Construction: Lightweight ergonomic design with soft plunger
- Tip Compatibility: Universal fit with standard micropipette tips
- Calibration: Factory calibrated with recalibration tool included
- Sterility: Autoclavable lower parts (for selected models)



Hydrothermal Autoclave Reactor

- Material: High-quality 316 stainless steel outer shell
- Liner Material: Teflon (PTFE) or PPL-lined chamber
- Capacity: 10 ml to 1000 ml (custom sizes available)
- Temperature Range: Up to 220°C – 280°C (depending on liner)
- Pressure Range: Up to 3 MPa (30 bar)
- Seal Type: Threaded cap with safety pressure sealing
- Usage Type: Batch reactor – non-stirred
- Application: Suitable for high-temperature, high-pressure synthesis

Note: Also on GeM – Direct purchase link available on request.





Magnetic Stirrer

- Speed Range: 100 to 2000 RPM (adjustable)
- Stirring Capacity: Up to 5 liters (model-dependent)
- Top Plate Material: Ceramic-coated / Stainless steel / Aluminum
- Power Supply: 220V AC / 50Hz or DC adapter (portable models)
- Controls: Analog knob or digital display (model-based)
- Optional: With or without heating function
- Magnetic Stir Bar: PTFE-coated included
- Body Material: Durable, chemical-resistant outer shell

TDS Meter

- Measurement Range: 0 to 9990 ppm (mg/L)
- Accuracy: $\pm 2\%$ F.S. | Resolution: 1 ppm (or 0.1 ppm in advanced models)
- Display: Digital LCD with auto hold and backlight (in some models)
- Temperature Compensation: Automatic (ATC) from 0°C to 80°C
- Calibration: Manual or auto single-point calibration
- Power Supply: Button cell battery or rechargeable (based on model)
- Form Factor: Pen-type (pocket), handheld, and benchtop models available



Conductivity Meter



- Measurement Range: 0 to 200 mS/cm (model-dependent)
- Accuracy: $\pm 1\%$ F.S. | Resolution: 0.01/0.1 μ S/cm
- Display: Large Digital LCD with backlight
- Temperature Compensation: Automatic (ATC) from 0°C to 60°C
- Cell Constant (K): 1.0 (standard), adjustable
- Calibration: 1 or upto 3 points manual/auto
- Power Supply: Battery operated or Adapter (based on model)
- Available Models: Portable / Benchtop

Note: Also on GeM – Direct purchase link available on request.



Digital Photocolorimeter



- Wavelength Range: 400–700 nm (model-dependent)
- Display: Digital LCD / LED display for absorbance & transmittance
- Optical System: LED light source with optical filters
- Measurement Range: 0–100% T, 0–1.99 Abs
- Accuracy: ± 0.01 Abs
- Sample Holder: Test tube or cuvette compatible
- Power Supply: 230 V AC or rechargeable battery option
- Calibration: Automatic or manual zero adjustment

Digital Thermometer

- Temperature Range: -50°C to $+300^{\circ}\text{C}$ (model-dependent)
- Accuracy: $\pm 1^{\circ}\text{C}$ | Resolution: 0.1°C
- Display: Clear digital LCD screen
- Probe Type: Stainless steel sensor probe (fixed or detachable)
- Response Time: < 5 seconds * Power Supply: Battery operated (AAA or button cell)
- Mounting Options: Handheld, wall-mount, or table-top options available
- Usage Environment: Indoor & outdoor compatible



Laboratory Hot Plate



- Surface Material: Cast iron / Ceramic-coated / Stainless steel
- Temperature Range: Ambient to 300 – 400°C (model-dependent)
- Top Plate Size: Starts from $6'' \times 6''$ or larger
- Temperature Control: Analog knob or digital PID
- Heating Element: Embedded resistance coil for uniform heating
- Power Supply: 230V AC / 50Hz
- Body Construction: Powder-coated mild steel or aluminum
- Shape: Rectangular or square (varies by model)

Note: Also on GeM – Direct purchase link available on request.





Vortex Mixer

- Speed Range: 0–3000 RPM (variable or fixed speed models)
- Mixing Mode: Orbital motion with small circular vibration
- Platform Type: Cup head for single tube; optional flat head for multiple tubes
- Capacity: 0.5–50 ml tubes (microcentrifuge tubes, test tubes, vials)
- Motor Type: Brushless or high-quality permanent magnet motor
- Operation Modes: Touch or continuous mode
- Power Supply: 230V AC

Bottle Top Dispenser

- Volume Range: 0.25 ml to 100 ml (adjustable)
- Accuracy: $\pm 0.5\%$ to $\pm 1.0\%$ depending on model
- Material: PTFE / Borosilicate / PP (chemical-resistant)
- Compatibility: Fits standard reagent bottles (GL 32, GL 45 adaptors)
- Dispensing Mechanism: Piston-driven, springless valve
- Autoclavable: Fully or partially autoclavable (121°C, 15 psi)
- Shape: Vertical mount on reagent bottle



Digital Hygrometer

- Humidity Range: 10% RH to 99% RH
- Temperature Range: -10°C to $+60^{\circ}\text{C}$
- Accuracy: $\pm 5\%$ RH (humidity), $\pm 1^{\circ}\text{C}$ (temperature)
- Display: Large LCD showing temperature & humidity simultaneously
- Power Supply: Battery operated (AAA or button cell)
- Sensor Type: Built-in or external probe (depending on model)
- Mounting: Table-top stand, wall-mount, or magnetic back
- Additional Features: Clock, alarm, min/max memory (optional)

Note: Also on GeM – Direct purchase link available on request.



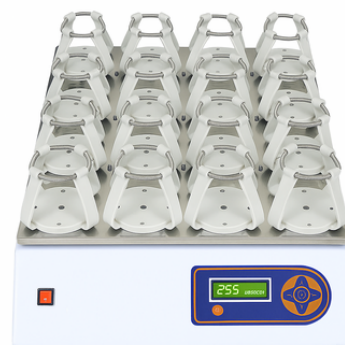
Digital Turbidity Meter



- Measurement Range: 0–1000 NTU (Nephelometric Turbidity Units)
- Accuracy: $\pm 2\%$ of full scale
- Resolution: 0.01 NTU (low range)
- Light Source: LED or tungsten lamp with 90° scattered light detection
- Display: Digital LCD display
- Sample Size: Standard cuvette / test tube
- Calibration: 2-point or multi-point calibration
- Power Supply: 230V AC or rechargeable battery option

Rotary Shaker

- Platform Size: 300 x 300 mm / 400 x 400 mm (varies by model)
- Speed Range: 20 to 300 RPM (adjustable)
- Orbit Diameter: Typically 20–25 mm
- Timer: 0–60 minutes or continuous run
- Load Capacity: Up to 5 kg or more (based on model)
- Tray Type: Detachable platform with clamps or adjustable bars
- Drive Mechanism: Belt-driven or gear motor-based
- Power Supply: 230V AC / 50Hz



Ultrasonic Bath Sonicator



- Frequency: 33–40 kHz
- Tank Capacity: 1.5 L to 20 L (model-dependent)
- Ultrasonic Power: 50W to 500W
- Heating Range: Ambient to 80°C (for heated models)
- Timer: 0–99 minutes (digital or analog)
- Material: Stainless steel tank (SS 304 grade)
- Controls: Digital touch or analog knobs
- Drain Valve: Included in larger models

Note: Also on GeM – Direct purchase link available on request.



Heating Mantle



- Capacity Range: 50 ml to 5000 ml (various models)
- Heating Element: Nichrome wire embedded in fiberglass net
- Temperature Range: Up to 400°C (model-dependent)
- Temperature Control: Analog knob or digital PID controller
- Outer Body: Powder-coated mild steel or aluminum housing
- Inner Lining: Heat-resistant woven fiberglass
- Power Supply: 230V AC / 50Hz
- Protection: Fuse and thermal insulation for safety

Melting Point Apparatus

- Temperature Range: Ambient to 300°C (model-dependent)
- Accuracy: $\pm 0.5^{\circ}\text{C}$ | Resolution: 0.1°C
- Display: Digital or analog temperature readout
- Heating Rate: Adjustable ($1^{\circ}\text{C}/\text{min}$ to $10^{\circ}\text{C}/\text{min}$)
- Sample Capacity: 2–3 capillary tubes at a time
- Observation: Built-in magnifying lens or digital camera display
- Power Supply: 230V AC



Digital Signature Certificates



- Certificate Types: Class 3 | DGFT | Document Signer (model-dependent)
- Validity Period: 1 year / 2 years / 3 years (as per requirement)
- Encryption Strength: 2048-bit RSA key pair (industry standard)
- Authentication Level: High-assurance, issued by licensed Certifying Authority (CA)
- Storage Medium: USB Crypto Token (FIPS-compliant)
- Usage Scope: e-Tendering, e-Procurement, MCA filings, GST, Income Tax, EPFO, and other government portals
- Issuance Time: Instant to 2 working days (after KYC & verification)
- Compliance: As per IT Act 2000 & CCA guidelines
- Renewal Process: Online application with existing token and updated KYC

Note: Also on GeM – Direct purchase link available on request.



Computer, Laptop & Accessories

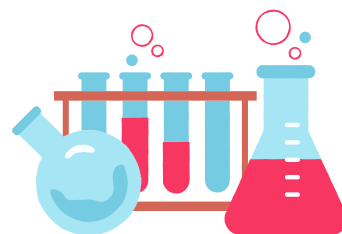


- **Processor:** Latest generation Intel® / AMD Ryzen™ (model-dependent) — suitable for running lab analysis and control software
- **RAM:** 4GB–32GB DDR4/DDR5 (expandable) — supports multitasking with multiple laboratory data applications
- **Storage:** SSD (256GB–2TB) or HDD (500GB–2TB) — for secure storage of research data and industrial records
- **Display:** 14"–17" Full HD / UHD with anti-glare coating — clear visibility for long lab sessions and detailed graphics
- **Graphics:** Integrated or dedicated GPU options (NVIDIA® / AMD) — ideal for image analysis, CAD, and simulation work
- **Connectivity:** Wi-Fi 5/6, Bluetooth, USB 3.0/3.2, HDMI, Ethernet — enables direct connection with lab instruments and industrial monitoring devices
- **Operating System:** Windows / Linux / macOS — compatible with a wide range of lab and industrial control software
- **Accessories:** Scientific keyboard/mouse, external data storage, cooling pads, docking stations, and UPS for uninterrupted lab operations
- **Power Supply:** Built-in rechargeable battery (laptops) or AC power adapter (desktops) — stable performance for continuous lab and field use
- **Optimized for laboratory data logging, instrument interfacing, and industrial automation software**
- **Systems can be custom-configured** — hardware, software, and connectivity options — to match specific laboratory instruments, industrial processes, and data analysis requirements
- **Multiple accessory options for enhanced productivity in technical workspaces**
- **High-speed SSD storage for quick processing of analytical and experimental data**
- **Compatible with specialized lab and industrial applications**
- **Warranty and after-sales service support for institutional and industrial clients**
- **Also suitable for educational, office, and personal computing needs**

Note: Also on GeM – Direct purchase link available on request.



ABOUT US



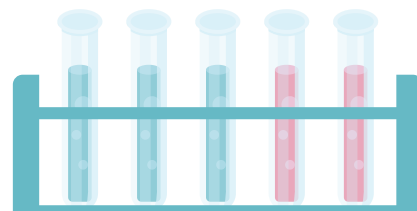
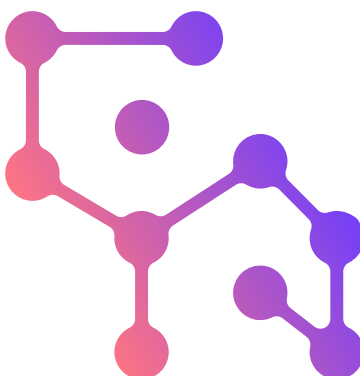
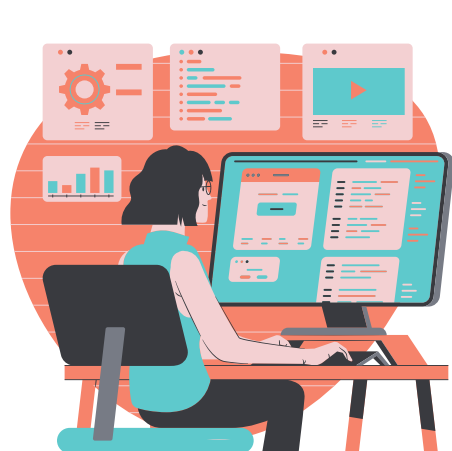
At **GK TECH SOLUTIONS**, we are dedicated to powering science and technology together. From cutting-edge laboratory instruments to essential digital solutions like Digital Signature Certificates, we provide reliable, affordable, and high-quality products to meet the needs of research labs, industries, and educational institutions.

We also supply all types of laboratory products customised as per customer requirements.

WHY CHOOSE US

- ✓ **Wide Product Range** — Lab instruments, testing devices, and tech solutions under one roof
- ✓ **Custom Solutions** — We source and supply lab products exactly as per your specifications
- ✓ **Quality Assurance** — Sourced from trusted manufacturers with strict quality control
- ✓ **Customer Support** — Dedicated assistance before and after your purchase

Disclaimer: Product specifications may vary without prior notice, depending on model and availability. All images are for reference only.



GK TECH SOLUTIONS

POWERING SCIENCE AND TECHNOLOGY TOGETHER

2/1313, Periyar Nagar Extension,
Dr. Ambedkar Road, Madipakkam,
Chennai-600091, Tamil Nadu, India.

Mob: +91 9498002207 Email : info@gktechsolution.com

Web : www.gktechsolution.com